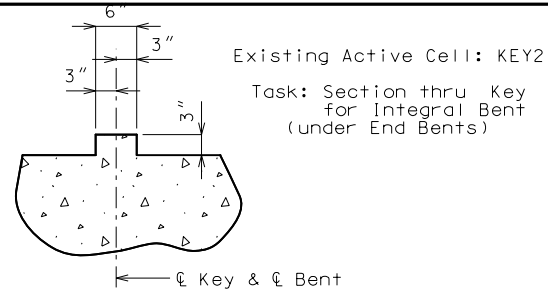
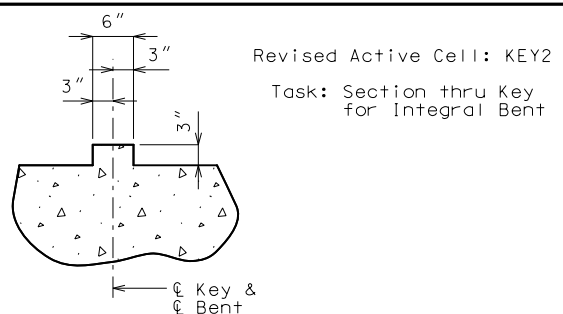


Revisions to Cells 8/21/19



Revised To



SECTION THRU KEY

SECTION THRU KEY

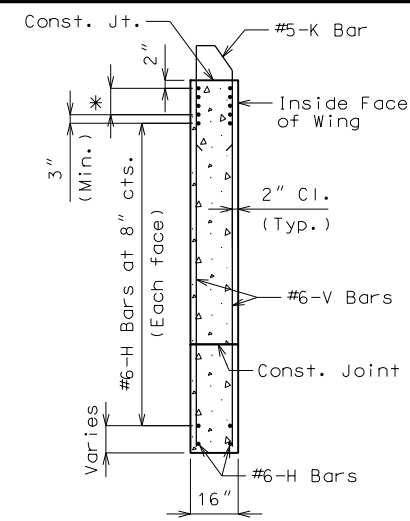
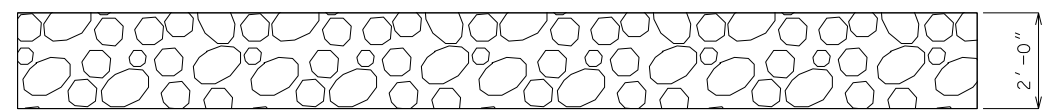
Revisions to Area Pattern scales

- Made these revisions to patterns under the Annotation category.
- Moved all patterns under the Annotation category directly under the Area Patterns Task. (Remove Annotation heading and all scale options)

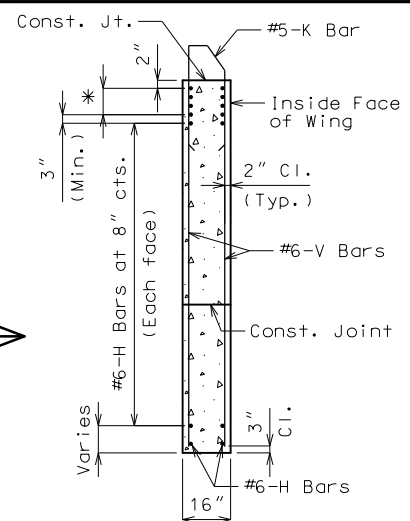
Existing Rock Blanket Areafill  
Scale = 0.08333



Revised Rock Blanket Areafill  
Scale = 2.0000



Revised To

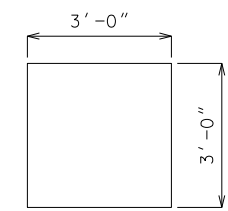


TYPICAL SECTION THRU WING

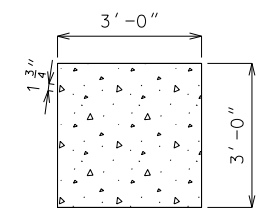
TYPICAL SECTION THRU WING

\* #8-H Bars at 3" cts. (Each face)(Place with grade)

\* #8-H Bars at 3" cts. (Each face)(Place with grade)



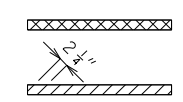
Existing Concrete Areafill  
Scale = 0.00125



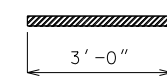
Revised Concrete Areafill  
Scale = 0.0500



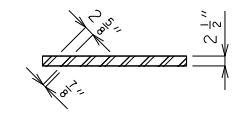
Existing Crosshatching/Hatching  
Spacing = 0.0017



Revised Crosshatching/Hatching  
Spacing = 0.008

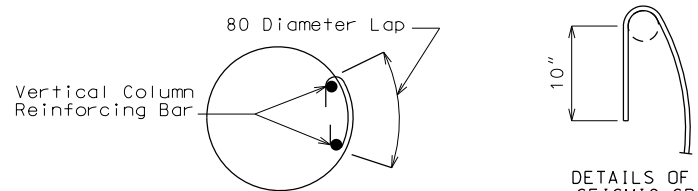


Existing Steel Hatching  
Scale = 0.00087



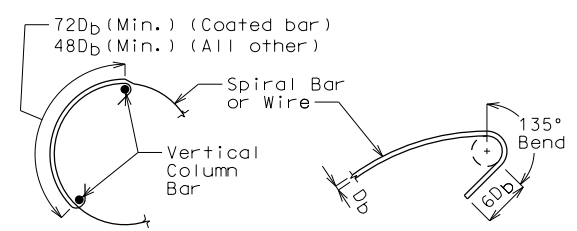
Revised Steel Hatching  
Scale = 0.003

Existing Active Cell: SPIRA  
Task: Anchor Splice for Spiral Bar (under Intermediate Bents)



ANCHOR SPLICES IN SPIRAL AROUND VERTICAL BAR  
(Use for intermediate splices of spirals)

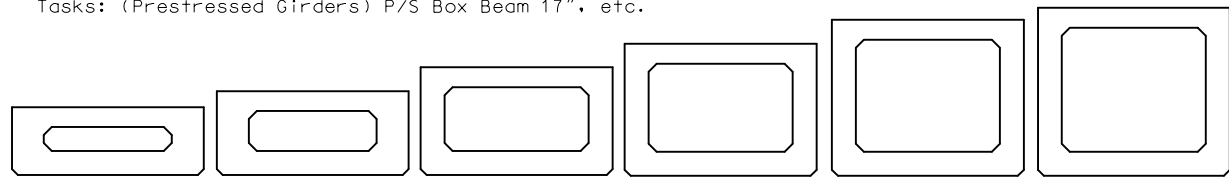
Revised Active Cell: SPIRA  
Task: Splice of Spirals



INTERMEDIATE SPLICE OF SPIRALS  
Standard 135-degree tie hooks that engage vertical column reinforcing bars shall be provided at each end of splice.

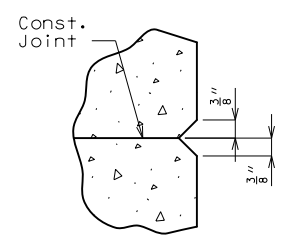
NEW

Tasks: (Prestressed Girders) P/S Box Beam 17", etc.



PSBB17 PSBB21 PSBB27 PSBB33 PSBB39 PSBB42

NEW



CHAMFER DETAIL

New Active Cell: End Bent Chamfer  
Task: Chamfer Detail (under End Bents)